

SINGAPORE \$8
MALAYSIA RM 18
HONGKONG HKD 90
AUSTRALIA AUS \$ 14.95
OTHERS US \$ 12

d+a[®]

DESIGN AND ARCHITECTURE

/ ISSUE 097. 2017 · S\$8 /

WWW.DESIGNANDARCHITECTURE.COM

COURTYARD HOUSE MING ARCHITECTS
THE WAREHOUSE HOTEL ZARCH COLLABORATIVES + ASYLUM
NATIONAL TAICHUNG THEATER TOYO ITO
GRAND HYATT CHENGDU TONYCHI & ASSOCIATES
PAVILION PONDEROSA PCA ARCHITECTURE
PAPER SPACE J.C. ARCHITECTURE

RIPPLE EFFECT
BRANDON HAW





**SKYTERRACE@DAWSON /
SCDA ARCHITECTS PTE LTD**

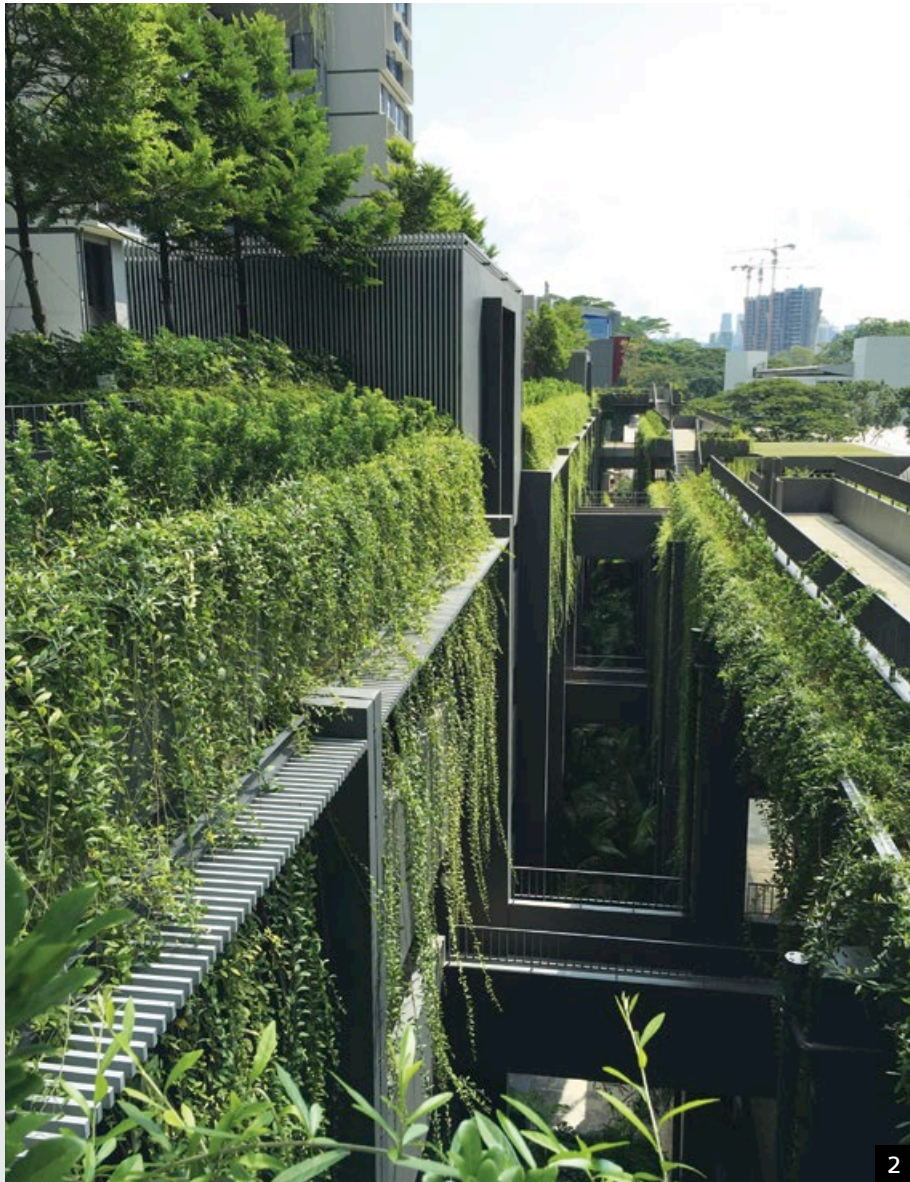
“When SCDA was commissioned by HDB to explore new possibilities in public housing design in Singapore, our response to this mandate was a design solution that embodied three key ideas – housing in a park, connectivity to surroundings and multi-generational living,” explains Ar. Soo K. Chan, founding principal and design director of SCDA Architects Pte Ltd.

The project site is located in Dawson Estate, bounded on the north by Margaret Drive and on the west by Dawson Road. Running along its entire southern boundary is the Alexandra Canal Linear Park. Margaret Drive is planned to be converted into an ecological corridor with finger park linkage to the Alexander Canal Liner Park along the eastern boundary of the site. Surrounded by a spectacle of green initiatives, Skyterrace@Dawson is designed with a sustainable sensibility.

When it comes to the challenges of designing within the boundaries of sustainability, the architect confides: “One challenge is to not ‘greenwash’ the design. Sustainability should be the architect’s baseline.”

Skyterrace@Dawson is planned to have seamless connectivity on three sides to greenery. This green concept is further brought into the development by introducing lush landscaping on the ground plane and that travels up the building façade in the form of green terracing, roof gardens and green sky terraces; spanning between the towers. Circled by greens, it allows users to indulge in the freshness and rejuvenated atmosphere within the concrete building.

Spatial frameworks are developed and introduced to reinforce the idea of multi-generational living and community building. The interconnected loft units allow extended families to occupy adjacent units, creating the possibility of combining a pair double-storey 4 or



2

1. Community spaces and integrated recreational facilities are designed in a park-like setting at SkyTerrace@Dawson.

2. The green concept is brought into SkyTerrace@Dawson through lush landscaping.

3. The architecture features an interplay of shapes puzzled together in a uniform configuration.



3

5 room unit with a studio apartment. The double-storey unit enjoys a double-volume living room that is attached on the upper level to a loft space and connecting floor to an adjacent studio unit. The juxtaposition creates an interactive spatial flow within the interlaced building model.

The concept of community building is further promoted by the creation of a variety of active and passive recreational spaces; allowing greater communal interaction. These community spaces and integrated facilities are designed in a park-like setting, enabling residents to enjoy the natural environment within the natural surroundings.

“The starting point of any project is the environment and cultural context. Local flora and fauna, locally sourced materials, and craftsmanship, are all important considerations for the design of any project. This approach lends itself to designs that project tranquility and capture the spiritual essence of ‘place’,” shares the principal of SCDA Architects.

There is a certain something in SCDA’s design language as they strive for tranquility and calmness qualified by space, light and structural order. A unified voice and holistic approach also allow the designs to be realised in a way that feels intuitive. The architecture provides a spectacular elevation to the vicinity with its rather outstanding escalating design feature in subtle spontaneity.

“Over the past 20 years, my role has been to refine the design language used in our multi-disciplinary studio to the point that we work in tandem and our designs become intuitive,” he concludes.

